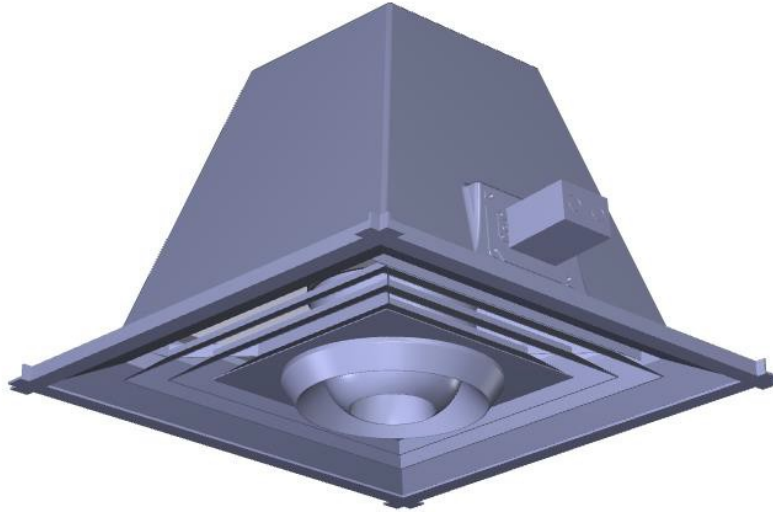


Operating Manual

Models: IC20-AC and IC20EC



Contents

INTRODUCTION.....	1
OPERATING INSTRUCTIONS.....	1
APPLICATION	1
HANDLING.....	1
STORAGE.....	1
INSTALLATION.....	2
START-UP CHECKLIST	2
CLEANING THE FAN.....	2
MAINTENANCE	2
WARRANTY INFORMATION	2
MANUFACTURER	3



INFORMATIONS DE SÉCURITÉ IMPORTANTES LISEZ ET SAUVEGARDEZ CES INSTRUCTIONS

AVERTISSEMENT – POUR RÉDUIRE LE RISQUE DE DÉPART D'INCENDIE, DE COMMOTION ÉLECTRIQUE OU DE BLESSURE POUR LES PERSONNES : Le travail d'installation et le câblage électrique doivent être réalisés par du personnel qualifié, en conformité avec la norme électrique américaine, ANSI/NFPA 70-1999, et toutes les normes locales.

AVERTISSEMENT: Risque de départ d'incendie, de commotion électrique ou de blessure pour les personnes durant le nettoyage ou la maintenance par l'utilisateur! Débranchez l'appareil de la source d'alimentation avant toute intervention.

POUVANT être utilisé avec des contrôles de vitesse à semi-conducteurs.

AVERTISSEMENT: Pour réduire le risque de départ d'incendie, de commotion électrique et de blessure aux personnes, les ventilateurs ZOO Fans doivent être installés avec des commandes de ventilateur fournis par ZOO Fans. D'autres pièces ne peuvent pas être substituées.

AVERTISSEMENT: Ne pas installer près d'un appareil de cuisson.

ATTENTION : Quand le service ou le remplacement d'un composant dans le ventilateur exige le déplacement ou le débranchage d'un dispositif de sécurité, le dispositif de sécurité doit être réinstallée ou remounted comme précédemment installé.

AVERTISSEMENT: Risque de départ d'incendie, de commotion électrique ou de blessure pour les personnes durant le nettoyage ou la maintenance par l'utilisateur! Débranchez l'appareil de la source d'alimentation avant toute intervention.

AVERTISSEMENT – POUR RÉDUIRE LE RISQUE DE DÉPART D'INCENDIE, DE COMMOTION ÉLECTRIQUE OU DE BLESSURE POUR LES PERSONNES, APPLIQUEZ CECI:

- a. N'utilisez cette unité que de la manière voulue par le constructeur. Si vous avez des questions, contactez le constructeur.
- b. Avant d'installer, de réparer ou de nettoyer l'unité, arrêtez son alimentation au panneau de distribution électrique et verrouillez le dispositif de coupure pour éviter une remise sous tension accidentelle. Si ce dispositif de coupure ne peut pas se verrouiller, fixez bien une signalisation très visibles, comme un étiquetage, au niveau du panneau de distribution.

AVERTISSEMENT : Une commotion électrique fatale à partir de raccords de câbles métalliques dans le boîtier de raccordement en plastique est possible en cas de connexion incorrecte – n'utilisez pas de raccords de câbles métalliques dans des boîtiers de raccordement en plastique.

ATTENTION : À ne pas utiliser dans des espaces avec des matières ou vapeurs dangereuses ou explosives.

DANGER : Équipement rotatif. La mort, une blessure grave ou des dégâts matériels peuvent en résulter. Les ventilateurs ZOO Fans sont conçus pour être suspendus hors de portée des gens.

AVERTISSEMENT : Restez vigilant, faites attention à ce que vous faites, et faites preuve de bon sens lors de l'installation de ventilateurs ZOO Fans. N'installez pas de ventilateurs si vous êtes fatigué ou sous l'influence de drogues, d'alcool ou de médicaments.

ATTENTION : Ne faites fonctionner le ventilateur que dans les plages spécifiées sur la plaque signalétique du moteur.

AVERTISSEMENT : Pour réduire le risque de blessure personnelle, ne pas tordre les supports de pales lors de leur installation, ou à l'équilibrage des pales, ou au nettoyage du ventilateur. N'insérez pas d'objets étrangers entre les pales de ventilateur en rotation.



IMPORTANT SAFETY INFORMATION READ AND SAVE THESE INSTRUCTIONS

WARNING – TO REDUCE THE RISK OF FIRE, ELECTRIC SHOCK, OR INJURY TO PERSONS: Installation work and electrical wiring must be done by qualified person(s) in accordance with all applicable codes and standards.

CAUTION: The installation of a ZOO Fan must be in accordance with the requirements specified in this installation manual and with any additional requirements set forth by the national electric code (NEC), ANSI/NFPA 70-1999, and all local codes. If you are unfamiliar with wiring, use a qualified electrician.

WARNING: To reduce the risk of fire, electric shock, or personal injury, mount directly to a structural framing member.

WARNING: To prevent electrical shock and/or injury disconnect fan from power source before you move or service the fan.

Suitable for use with solid-state speed controls.

WARNING: To reduce the risk of fire, electric shock, and injury to persons, ZOO Fans must be installed only with controllers supplied by ZOO Fans. Other parts cannot be substituted.

CAUTION: When service or replacement of a component in the fan requires the removal or disconnection of a safety device, the safety device is to be reinstalled or remounted as previously installed.

WARNING: Risk of fire, electric shock, or injury to persons during cleaning and user maintenance. Disconnect the fan from the power supply before servicing.

WARNING – TO REDUCE THE RISK OF FIRE, ELECTRIC SHOCK, OR INJURY TO PERSONS, OBSERVE THE FOLLOWING:

- a) Use this unit only in the manner intended by the manufacturer. If you have questions, contact the manufacturer.
- b) Before servicing or cleaning unit, switch power off at service panel and lock the service disconnecting means to prevent power from being switched on accidentally. When the service disconnecting means cannot be locked, securely fasten a prominent warning device, such as a tag, to the service panel.

WARNING: Do not install in a cooking area.

WARNING: Fatal electric shock from metal cable glands in the plastic terminal box is possible if incorrectly connected – do not use metal cable glands in plastic terminal boxes.

WARNING: Do not operate the fan in spaces with hazardous or Explosive Material and Vapors.

DANGER: Rotating equipment. Death, severe injury and property damage may result. ZOO Fans are intended to be hung out-of-reach of people.

WARNING: Stay alert and use common sense when installing fans. Do not install fans if tired or under the influence of drugs, alcohol, or medication.

CAUTION: Only operate the fan within the ranges specified on the motor's type plate.

WARNING: Do not bend the blade brackets when installing, adjusting, or cleaning the fan. Do not insert foreign objects in between rotating fan blades.

CAUTION: The ZOO Fans product warranty will not cover equipment damage or failure that is caused by improper installation.

INTRODUCTION

Thank you for ordering a ZOO Fan! Contained in this box, you should find the following:

- 1. This booklet.** Please read this booklet entirely, before you install or use your ZOO Fan.
- 2. The Fan.** We suggest you leave it in the box until it's time to install it.
- 3. Installation Hardware.** Depending on the method of installation your plan calls for, additional hardware may be required to install ZOO Fans. If you ordered multiple fans, be sure to keep the installation hardware of each fan together.
- 4. Installation Guide.** This important reference is part of your Operating Manual and contains important safety information, a list of parts included with this fan, and guidance on installation methods.

OPERATING INSTRUCTIONS

These instructions do not cover every conceivable installation, operation or maintenance situation. If special problems arise that are not covered in the Operating Instructions or if you require any additional information, please contact ZOO Fans or your ZOO Fans' representative. These Operating Instructions and the Installation Guide are part of the product and, as such, are to be kept accessible at all times.

- Switching frequency: avoid excessive and extreme switching of the controller, if applicable—damage to the windings is possible.
- Thermostat switches integrated in the winding or PTC thermistors act as motor protection and must remain connected.
- Before restarting an overheated motor, analyze and repair the cause (e.g., storage damage, dirt, etc.)—restarting after cooling without repairing the fault may cause injury and damage and void your product warranty.

APPLICATION

These fans may only be operated if they are installed in accordance with their intended use and safety, have been secured through protective equipment in accordance with all applicable safety requirements mandated by federal, state, and local codes, and other protective measures as may be required (see "Important Safety Information", above).

HANDLING

- Avoid impacts and collisions to the fan(s).
- NEVER LIFT OR INSTALL THE FAN USING THE TERMINAL BOX
- NEVER LIFT OR INSTALL THE FAN USING CONNECTED ELECTRICAL & COMMUNICATION CABLES.

STORAGE

- Store the fan in its original packing, dry and weather protected.
- Avoid impacts and collisions to the fan(s) while in their boxes.
- Only store where temperatures are between -22°F and +104°F.
- Prevent prolonged storage periods—we recommend a maximum of one year. Before installing, check for proper functioning of the motor bearing suspension. Corrosion and ageing of mechanical components, bearings, etc. can occur that can lead to possible preliminary damage and reduce the useful life of the fan.

INSTALLATION

Please refer to the enclosed “**Installation Guide**” for installation information. Be sure you have developed a sound installation plan—if you have *any* questions about your installation plan, please contact your ZOO Fans’ Representative or ZOO Fans—we’re here to help! Installation Guide also available at <http://www.zoofans.com/our-products/drop-ceiling/>

START-UP CHECKLIST

Before initial operation, check the following:

- Installation and electrical connection(s) have been properly completed.
- Requisite safety equipment is in place, fan is securely fastened to an appropriate attachment point and all bolts, clamps, nuts, etc. are tightened as necessary.
- No foreign material can be drawn into or blown through the fan.
- Watch for smooth operation; unusual noise or strong vibrations due to imbalance can lead to failure.
- The motor must be securely attached to the adapter ring, which must be securely attached to the diffuser.
- Do not power the fan until the diffuser is in-place to eliminate risk of reaching into rotating parts.
- The fan must be hung in a manner that complies with all applicable codes, regulations and workplace requirements.

CLEANING THE FAN

- **CAUTION:** Before servicing the fan ensure all POWER IS OFF and locked out to avoid injury.
- Take note of abnormal noise and/or vibration which may indicate the need for cleaning. Periodic cleaning is necessary to prevent imbalance caused by a build-up of dirt. Cleaning intervals should be in accordance with the degree of contamination of the impeller.
- Turn off the fan and disconnect the power before cleaning with a damp cloth.

MAINTENANCE

- During long down-times in humid conditions damage to the windings is possible. Run the fans for at least 2 hours per month to evaporate any moisture that may have entered.
- Prevent long standstill times as much as possible.
- Maintenance is only to be performed by qualified and trained service personnel. Observe all safety instructions and work regulations during all service and maintenance work.

WARRANTY INFORMATION

These ZOO Fans In-Ceiling Models come with a two-year warranty under normal use and service. Any requests for repair or replacement should be directed to your point of purchase, however, please feel free to contact us directly should you experience problems with our products. For complete information about this warranty, please refer to the Terms and Conditions of Sale, which also contains the complete and solely valid warranty stipulations.

MANUFACTURER

Our products are manufactured in compliance with applicable international standards and regulations. If you have any questions about how to use our products or if you are planning special applications, please contact:

ZOO Fans
1650 38th St. Suite 201W
Boulder, CO 80301
Phone: 303.557.1852
Fax: 720-596-5192
info@zoofans.com
zoofans.com



