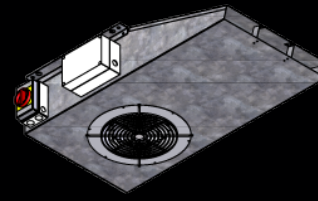


PERFORMANCE DATA



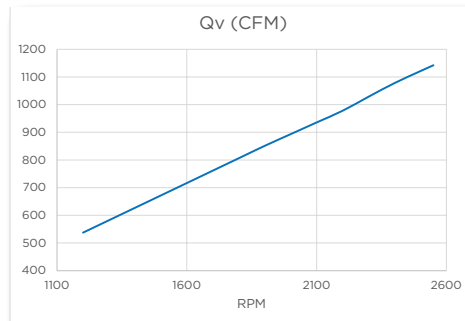
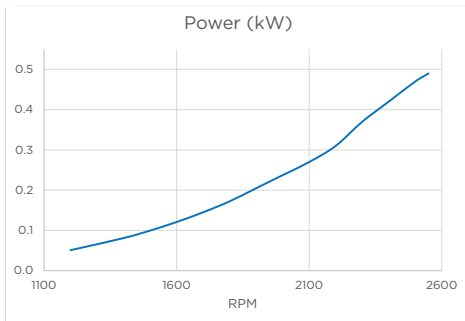
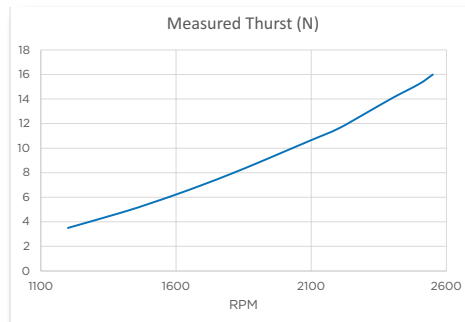
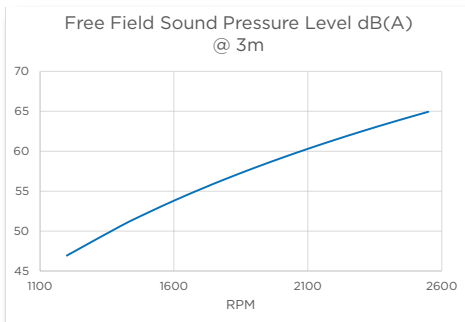
JVEC-SLP
Super Low Profile
Smart Garage Ventilation Fan

FAN SPECIFICATIONS

Test results for JVEC-SLP EC High Efficiency Fan with the 208-240V EC direct drive motor with safety grille on inlet.

- JVEC-SLP Electronically Commutated Motor
- 208-240V 50Hz/60Hz, 49 watts, 2.0A
- 2550 RPM
- Finger Guard Grille on inlet side and Air Guide on outlet side

Test results were measured in accordance to DIN 24163, EN ISO 13347-3



DATA TABLE

RPM	CFM	Velocity (m/s)	Thurst (N)	Power (kW)	Amps	Sound Pressure (dB(A) @ 3m)
2550	1142	22.6	16.0	0.5	2.1	64.9
2500	1121	22.2	15.2	0.5	2.1	64.5
2400	1078	21.3	14.1	0.4	2.0	63.5
2300	1028	20.3	12.8	0.4	1.9	62.5
2200	978	19.3	11.6	0.3	1.6	61.4
2100	936	18.5	10.7	0.3	1.4	60.3
2000	893	17.7	9.7	0.2	1.2	59.1
1900	851	16.8	8.8	0.2	1.0	57.9
1800	806	15.9	7.9	0.2	0.9	56.6
1700	761	15.1	7.0	0.1	0.7	55.3
1600	717	14.2	6.2	0.1	0.6	53.8
1500	672	13.3	5.5	0.1	0.5	52.3
1400	627	12.4	4.8	0.1	0.4	50.6
1200	538	10.6	3.5	0.1	0.3	46.9