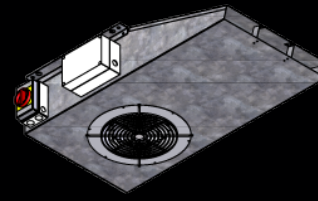


PERFORMANCE DATA



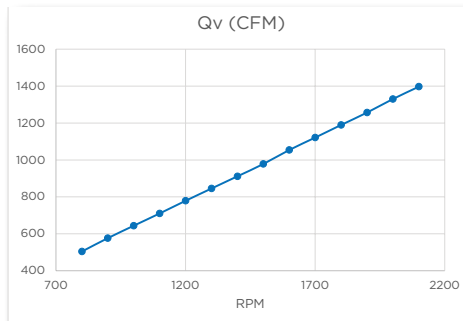
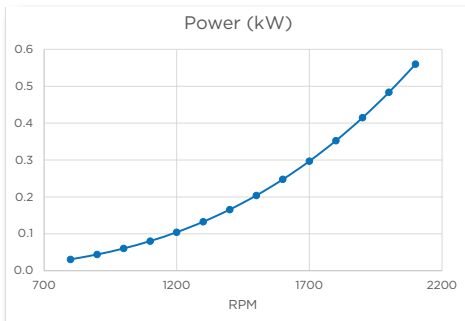
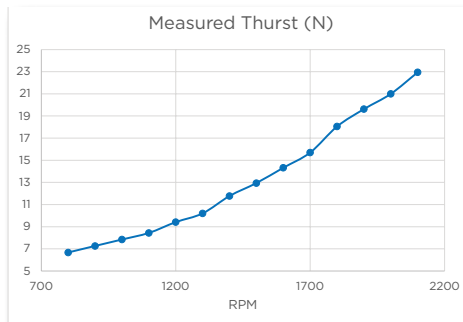
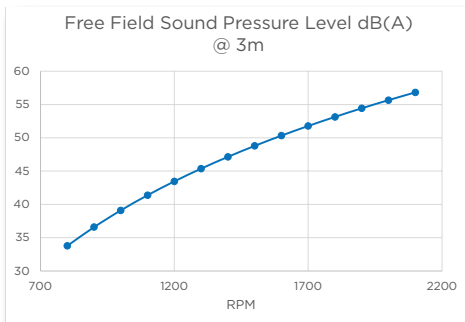
JVEC-ULP
Ultra Low Profile
Smart Garage Ventilation Fan

FAN SPECIFICATIONS

Test results for JVEC-ULP EC High Efficiency Fan with the 208V - 277V EC direct drive motor with safety grille on inlet.

- JVEC-ULP Electronically Commutated Motor
- 208V - 277V 50Hz/60Hz, 56 watts, 2.8A
- 2100 RPM
- Finger Guard Grille on inlet side and Air Guide on outlet side

Test results were measured in accordance to DIN 24163, EN ISO 13347-3



DATA TABLE

RPM	CFM	Velocity (m/s)	Thurst (N)	Power (kW)	Amps	Sound Pressure (dB(A) @ 3m)
2100	1397	24.6	23.0	0.6	2.8	56.8
2000	1331	23.4	21.0	0.5	2.4	55.7
1900	1257	22.1	19.6	0.4	2.1	54.4
1800	1190	20.9	18.1	0.4	1.8	53.1
1700	1121	19.7	15.7	0.3	1.5	51.8
1600	1054	18.6	14.3	0.2	1.2	50.3
1500	978	17.2	12.9	0.2	1.0	48.8
1400	912	16.0	11.8	0.2	0.8	47.1
1300	846	14.9	10.2	0.1	0.7	45.4
1200	779	13.7	9.4	0.1	0.5	43.5
1100	710	12.5	8.4	0.1	0.4	41.4
1000	644	11.3	7.8	0.1	0.3	39.1
900	577	10.2	7.3	0.1	0.2	36.6
800	504	8.9	6.7	0.1	0.2	33.8